



OREAD MOUNTAINEERING CLUB MAGAZINE

JULY 2022



Roger Gibbs on Brazen Buttress, Mother Carey's E2 5b - not actually the route he has written about in here – but a sunny reminder of the Bank Holiday Pembroke meet. Photo courtesy of Tom Livingstone.

Editorial

The holiday season is almost upon us, but for those not heading to the Alps there are local walks planned, including part two of the Gritstone Trail and an exploration of the Matlock/Tansley area. Also a barbecue at Tan yr Wyddfa following on from the annual Tan yr Wyddfa working party and a weekend Peak District climbing meet.

Leaders are still needed for the August Bank Holiday meet and the Wednesday walk on 5 October. Can you help? See below.

Looking ahead – there is an exciting ice-climbing opportunity coming up in January – urgent commitment needed – see page 7 plus an interesting series of lectures planned at the Royal Oak, Ockbrook, all the details on page 4, but there is still room for your contribution – speakers are needed for February and March.

Write-ups include sea cliff climbing in Pembroke and the Little Langdale meet and a tribute to Chris Martin who died recently.

Due to the timing of my holidays, this year there is a July issue and an August/September joint issue will appear in early August.

Copy Deadline 28 July.

Exciting Opportunities

Most of the Wednesday and Weekend Walk leadership opportunities in the Oread calendar have now been successfully filled. However, a leader is still needed for **Wednesday 05 October Hope.**

In addition, there are two traditional meets that may require some focus:

Sunday 04 December Post-prandial Walk tbc

Monday 26 December Boxing Day Walk tbc

Please let me know if you are interested in putting yourself forward.

Stuart Firth email xxxxxxx; tel. xxxxxx

Forthcoming Meets 2022

Thanks are due to Jeff Ingman for putting together the 2023 ice climbing meet with thought on suitability for novice or less experienced Oreads in addition to seasoned veterans. See the details on pages 7-8 and **contact Jeff as soon as possible to allow him to make bookings.**

Two day rock climbing meets coming up in the Peak District, one in August and one in September, we hope that these will be as popular as the new members' meets earlier this year. Thanks to Lance Baker and Chris Ashworth for leading these.

Also this year, in preparation for winter and for the Ice Climbing met in Rjukan,

Norway in Jan. 2023 we have two dry tooling meets in Nov and Dec at Masson Lees, led by Jeff Ingman and Tim Sellears. If you are thinking of ice climbing this winter, or joining the Norway meet, get yourself along to these. Thanks to Jeff and Tim for setting these up.

Lastly for 2022 **we have a slot in the meets calendar for the August Bank Holiday without a meets leader.** Camping would probably be best, if you have an idea for this and would be happy to lead a meet please let me know.

Michael Moss: email: meetsec@oread.co.uk Tel xxxxxxxxxx

July	6	Wednesday walk	Wildboardclough	Clive Russell
	11-15	Hut working party	Tan yr Wyddfa	Dave Helliwell (Snod)
	15-16	BBQ	Tan Yr Wyddfa	Tony Howard
	16	Weekend walk	Gritstone Trail 2	Stuart Firth
	21	Thur short walk	Ashover North	Ruth Gordon
	23 Jul. - 7 Aug.	Alpine meet	Argentiere (Chamonix), France	Gill and Chris Radcliffe
August	3	Wednesday walk	Matlock/Tansley	Jon Gwyther
	13/14	Day climbing meet	Peak District	Lance Baker
	18	Thur short walk	Cancelled! Everyone on holiday	Ruth Gordon
	20	Weekend walk	Longshaw Estate cafe	Jan Wilson
		Late summer BH	Camping	Meet leader needed
		Tides low pm Penzance & Pembroke		
Sept	3/4	BARMY comp	Heathy Lea	Michael Moss
	7	Wednesday walk	Ashford tea room	John Gwyther
	10/11	Day climbing meet	Peak District	Chris Ashworth
	15	Thur short walk	Ilam to Calton	Ruth Gordon
	17	Weekend walk	Ilam NT café	Louise Amandini
	30/1	Climb and curry High House,	Borrowdale, Lake District	Tony Howard, K-Fellfarers' hut
Oct	5	Wednesday walk	Hope	Meet leader needed
	8/15	Mediterranean sport climbing		Avoiding half term 24/28 Oct
	15	Weekend walk	Froghall	Stuart Firth
	20	Thur short walk		
	23-29	Strawberry cottage, Glen Affric	Scotland	Peter Amour
	31	Start Monday evening indoor m	Climbing unit, Derby	
Nov	2	Wednesday walk	Hollingsclough	Clive Russell
	5	Bonfire	Heathy Lea	
	12	Weekend walk	Hathersage (Outside cafe)	Richard Linney
	13	Dry tooling	Masson Lees	Jeff Ingman and Tim Sellears
	17	Thur short walk		Ruth Gordon
	18-19	Fylde hut	Little Langdale, Lakes	Dave Helliwell (Snod), Fylde MC hut swap
December	3	Annual dinner, Fox and Goose	Nr Chesterfiled.	Chris and Gill RadclifConfirmed
	4	Post prandial walk		Location TBC
	7	Wednesday walk	Rowsley (Massarellas cafe)	
	9/10/11	Bullstones		
	14	Black rocks evening meet	Cromford, Derbyshire	
	15	Thur short walk		Ruth Gordon
	17	Dry tooling	Masson Lees	Jeff Ingman and Tim Sellears
	26	Boxing day walk		Location TBD
	24-3 Jan	Christmas and New Year	Tan Yr Wyddfa	

Indoor lecture programme 2022-23 at the Royal Oak Ockbrook Rob Tresidder

This year I am hoping to be able to return to pre-Covid levels of talks especially from outside speakers. Last winter there were in the end no visitors, after two withdrew for Covid transmission reasons. Things are looking much better this time with three outsiders already committed. There are a couple of alterations from the usual “first Tuesday of the month”. The beginning of October is the Royal Oak’s beer festival. Worth a visit as they are once again Derby CAMRA’s pub of the year. The first Tuesday in January is too close to the bank holiday, so I have moved that as well.

What I need from Oreads is some help with the gaps! Do you have a tale to tell? Do you know someone that you would like to hear speak to the Oread? Let me know and I will make the invitation.

11 October 2022. **Spike Johnston**. Orkney 2021 **and** Hardangervidda 2019.

01 November. **Brian Hall**, author of soon to be published *Climbing to Extinction*, an account of BH’s climbs with several deceased climbers. Some who know me too well may be relieved to discover that this has nothing to do with ExtinctionRebellion!

06 December. **Jon Morgan**, professional anaesthetist, professional mountain guide.

10 January 2023. **Graham Hoey**, Peak based author, new router, photographer, climbing guidebook writer.

07 February. **suggestions/offers please!**

07 March. **suggestions/offers please!**

Rob Tresidder email: xxxxxxxxxx

Wednesday 6 July Wildboarclough Clive “Rusty” Russell

Please assemble at the car park (SJ 987 697) adjacent to Clough House. This is about 1 mile N. of the disused quarry where we have previously parked en route to Shutlingsloe, and on the opposite side of the road. We shall set off from here at about 10.30 If the road signs say “Nottinghamshire” just nip 62.5 miles due west.

We shall travel initially to the East to drop down into the Dane Valley downstream from Knar and thence to Panniers Pool and Danebower Quarries. Thereafter we shall travel in the direction of the Cat and Fiddle before descending to Cumberland Brook which is a remote place much to the taste of

those disillusioned with certain sectors of humanity.

The underfoot conditions, both soft and rocky in turn may suffer by comparison with Wembley but are superior in my view to those described by your Hon Editor on another occasion as "God forgotten bogland" On that occasion, the abundance of North bound footmarks and the total absence of those in the return direction probably created a false impression of perils ahead'

Rusty: Email xxxxxxxxx tel. xxxxxxxxx

11-15 July Tan yr Wyddfa Working Party Dave Helliwell

Now's the chance for you to have a few days free of charge at Tan yr Wyddfa and help to maintain the Club's property. There will be lots of painting and cleaning, plus tidying up outside, though Nodge will need to find a new job now we have a local gardener to cut the grass. It's not all work though, there will be time for some climbing and walking as well. I will be going down on Tuesday 12th and, depending on the weather, staying on for the Barbecue meet at the weekend. Dave "Snod" Helliwell email xxxxxxx tel. xxxxxxxxx

15 -17 July: Tan -Yr-Wyddfa BBQ Tony Howard

Summer in North Wales: the very phrase brings back memories of hot and sticky days walking the hills or climbing in 'The Pass' or Tremadog, baking at Gogarth, or best of all - pleasant afternoons hiding from the heat on Cyn Las, Cloggy, Craig Yr Ysfa, Llech Ddu, or Lliwedd. Alternatively, we could be walking in the rain and testing the drying room – but that probably won't happen.

The weather will be brilliant (straight face here) and on Saturday night we will be having a BBQ. You should bring your own food and drink. I will provide some BBQ machines and fuel.

Please note that this meet will be immediately preceded by Snod's Working Party Meet from the 11th to the 15th July. Do both!

If you want to come along, please let me know ASAP.

Tony Howard email xxxxxx Tel: Home xxxxxx Mobile: xxxxxxxxxx

Saturday 16 July Gritstone Trail Part 2 Stuart Firth

Meet 10:15 for a 10:30 departure at Timbersbrook car park; OS Explorer 268; GR 894 627.

We shall endeavour to link up with our previous stage by the following route: Timbersbrook, The Cloud, Raven's Clough, Barleigh Ford Bridge, Dunkin's, Hawkslee, Stilesmeadow Farm, Bosley (possible pub), Lymford Farm, Tunstall Road, Timbersbrook.

Bring lunch. Save the planet, share a lift, enjoy the craic.

Contact: Stuart Firth: xxxxxxxxxx; tel. xxxxxx

Thursday 21 July Short Walk Ruth Gordon

This walk will explore the North side of Ashover, OS explorer 269 Chesterfield and Alfreton. Park in the large car park at Ashover village hall/ surgery SK 352 633 for an 11.00 am start. There is a steady climb at the start to Far Hill trig point, (the only significant climb of the route) then field paths to Alton, North edge, across Press reservoirs, and left on the bridleway. Over Birkin lane, fieldpaths to High Ashes farm, lane to Span Carr farm, and a field path direct to Ashover, (Rattle). 6-7 miles.

Ruth Gordon email: alistair.ruth@btinternet.com tel. xxxxxx

23 July – 7 August Chamonix Gill Radcliffe

The plan is to return to Camping Du Glacier D'Argentiere camp site near Chamonix. **Hopefully you will already have booked your pitch online.** If you have any questions or are struggling to book then please get in touch : Gill Radcliffe tel. xxxxxx email xxxxxx

Wednesday 3 August Tansley/Matlock walk John Gwyther

We will meet outside Highfields Upper School at 10 o'clock (SK 31169 61309 plenty of free parking and the school will be closed) and proceed down Upper Lumsdale to the Arkwright Society site (have a look 'round if possible). We then bear left towards Tansley, pass through the village, cross the A615 and head towards Riber. Descend to Old Matlock, pass under the railway, cross the not very mighty Derwent and head up to the Heights of Abraham. We will then walk over to Bonsall (where the church may be open for refreshments), back down towards Cromford, 'round Harp Edge and back to Matlock. We'll descend to the station and ascend to Starkholmes, Matlock Cliff, Lumsdale and back to the school. Please bring refreshments but I thought we might stop at Kath's café for a post walk cuppa. The walk is 17.5 km 628m ascent and takes 4.5 hours. Please let me know if you're coming.

John Gwyther tel. xxxxxxxxxxxx

Saturday 20 August Longshaw Walk Jan Wilson

A chance to explore edges and valleys on a nominally 12 mile walk starting from the free car park just behind The Fox House. We will meet from 10:00AM at the picnic tables in the car park (not the pub tables) for a 10:30AM start. Our route will go up through the Burbage Valley and along Stanage then down into Hathersage via the churchyard where we can take a break and have a snack. In Hathersage there will be an opportunity for a drink if the party is amenable or we go straight on to the river path before ascending to Grindleford station. Crossing

the main road we go up through Hay Wood and onto White Edge passing or stopping at The Grouse as the mood takes us. We descend and cross the main road into the Longshaw Estate before returning to the Fox House. Again there will be the opportunity for a tea stop at Longshaw.

There are plenty of great views and time to be sociable so if you are at a loose end I will look forward to seeing you for the complete walk or if you prefer there are multiple opportunities to shorten the distance.

Jan Wilson email: xxxxxxxxx tel. xxxxxxxxxxx

Ice Climbing in Rjukan, Norway, 14 – 21 January 2023 Jeff Ingman



I know how frustrating it can be waiting for good winter conditions to form in Scotland, getting everything lined up, then having your plans reduced to tatters when the weather changes. Getting any progress in your winter climbing can be very slow if you confine your activities to the UK alone. To try and make progress I had to look elsewhere in Europe – to get the required ice climbing mileage to hit the Scottish routes when they came into condition. For me this started in Rjukan.

Rjukan is an historic place, during WWII Norwegian resistance fighters supported by British soldiers thwarted German attempts to make atomic bomb components at the Vemork power plant. The building still exists today and the gorge below it contains a wealth of ice climbing at all grades.

With an average temperature of minus seven in January, Rjukan is about as dependable as you can get for European ice climbing. There are routes of all grades and levels of commitment, from easy top ropes to massive multi-pitch challenges.

If you are starting out on your ice climbing journey then this is the meet for you. Guided instruction will be available for the first two days of the meet for up to four club members. Please thank the next committee member you see.

If you're a seasoned veteran then where have you been hiding? Come along and do some routes whilst the novices receive professional instruction. The Oread have not done anything like this during my time in the club, so it's a unique opportunity. I suggest you grab hold of this chance.

Dates are 14 to 21 January 2023

Likely costs in Norway are £500 per person for Flights, bags, accommodation and car hire. Based on four people sharing. Flights are from Manchester to Oslo (Torp).

The Oread will organise professional instruction for the first two days for up to four club members. The cost of the guide will be partly covered by the Oread MC. You will need basic climbing skills: Knots, belaying, rope work and know how. It's cold over there, you'll need warm clothes plus stiff boots (B3), modern axes, crampons, helmet and harness. You may be able to borrow some of this from likely suspects in the club and there is a hire option for boots in Rjukan if you're quick.

Accommodation will be at Rjukan Hytteby in comfortable chalets. There will be a mixture of self-catering (group meals) and eating out. I have not included food in the costs above. As a guide costs in Norway are about 50% higher than in the UK, so budget about £130.

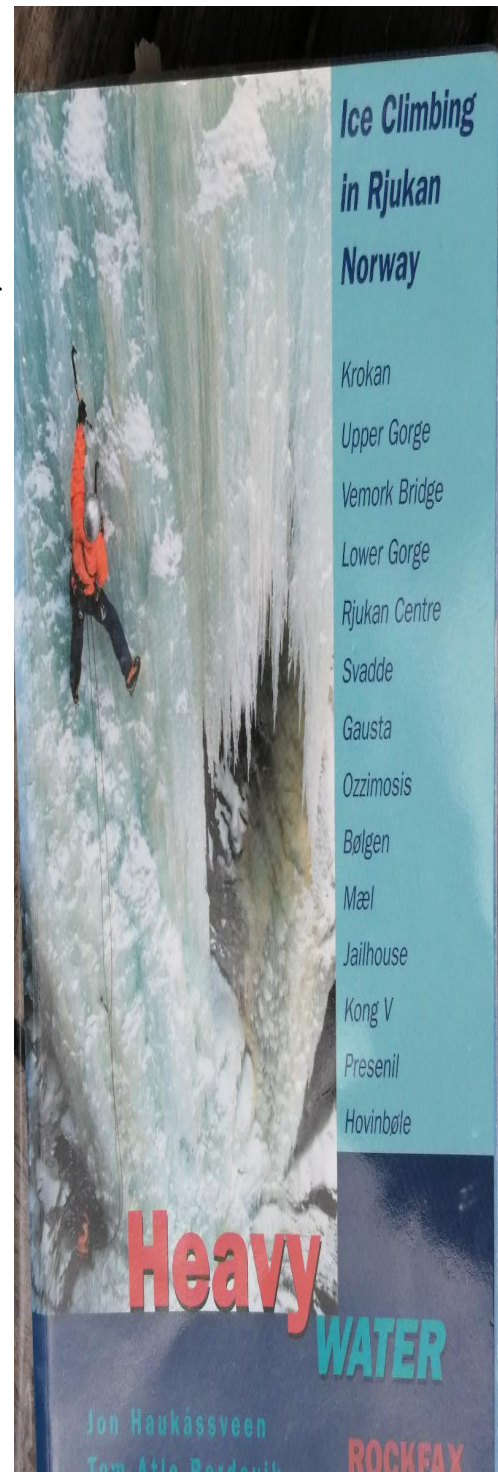
Rjukan-hytteby.no

I've done three extended trips to the Rjukan valley so I know my way around and what is on offer. The climbs are good and the conditions have been excellent on each occasion.

As well as massive ice falls at all grades there are also mixed climbing opportunities for those who are interested.

The cost of everything seems to be going up at the moment. If you're interested in this meet then let me, Jeff Ingman know as soon as possible. I'd like to book the flights, accommodation and cars very soon.

To prepare for this meet and winter climbing in general we will be organising some dry tooling at Masson Lees at the end of the year. Two dates are in this newsletter – 13 November and 17 December. Watch out for more info on those meets in the usual places. Jeff Ingman email: xxxxxx tel. xxxxxxxxxxxx



News, Articles and Reports from Meets

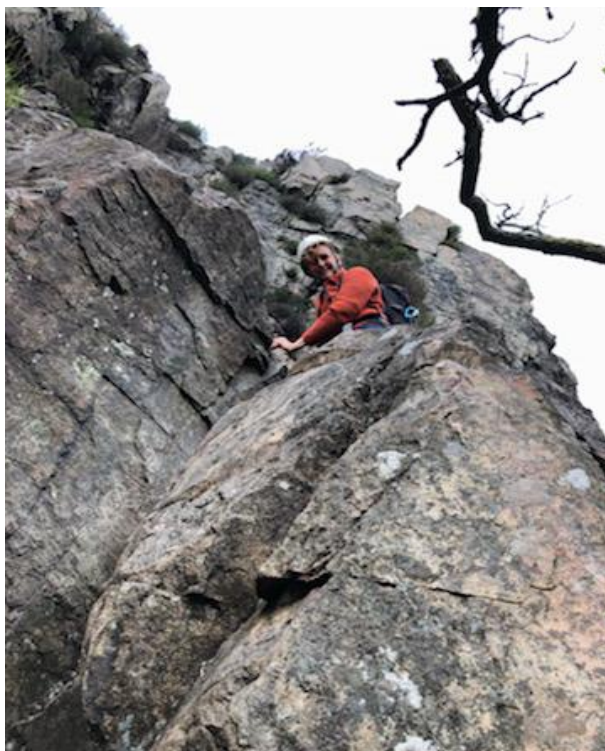
10 -11 June Little Langdale - A Small Select group! Pip Leach

At one point, it was looking as if I was going to be 'Billy no Mates', and in the hut on my own. Well that would be a first! Perhaps following the long bank holiday Jubilee weekend, many Oreads had already been away, or were still away. There was some interest but due to illness, injury or work load, sadly folks had had to drop out. Thankfully, Rachel Walker and Peter Masters stepped in at the last minute, and decided to come, Peter arriving on his motor bike, early Saturday morning. Since the Little Langdale hut has been refurbished, it felt as if we had our own private holiday let for the weekend, at minimal cost!



The weekend was convenient for me, as I was entered into the Coniston 15km trail race. Saturday, the weather was unbelievably windy, so much so, that the fell race in Ennerdale and the Great North Swim across Windermere,

were cancelled. My race went ahead. I really enjoyed it, but the uphill section on the Walna Scar Road, head on into wind, absolutely sapped my energy. I finished in one piece, but had to cycle back through to Little Langdale afterwards, feeling somewhat shattered. My red face in the photo at the finish sums up the effort!



Meanwhile, Peter was doing a low level walk but Rachel was nearly blown off her feet on Wetherlam.

Sunday, we went for a Scramble from Great Langdale, up Raven Crag. One move was really committing, from a pinnacle onto a rounded bit of rock.

Rachael on the tricky pinnacle.

It was only supposed to be Grade 2, so we hadn't taken a rope, but a few slings helped make the move. We were then heading for the excellent looking scramble on Loft Crag. Unfortunately, the wind gusted to an alarming degree, the Heavens opened, including hail, so we decided to leave it for another day.

An extra night was spent in the hut, but Rachel and Peter returned home, early the next morning. I fitted in a five Wainwright Day, from the end of Thirlmere, my legs reminding me of my exploits two days earlier!



Oh dear – says it all!

Thanks to Peter and Rachel for our fun filled and action packed weekend.

Daydreams - Roger Gibbs

I love the collection of essays and photos in Extreme Rock. Perhaps the quality of the writing is better in its older brother Hard Rock, but ER has the routes you really want. It's a storied tome, slightly showing its age here and there but still full of stunning adventures. Ken Wilson did a superb job of capturing a snapshot of the world of British climbing at a time of rapid change; some legacy. And Jim Perrin's writing usually bumps up the standard to boot. So when you get a chance to bag an Extreme Rock tick, you jump in.

Apparently, one of the problems with Mewsford is the huge number of brilliant routes that you walk past on the approach - you really need to want to go there! It was a bit of a hike but talk of great routes in the right grade range that take brilliant and complex lines up a magnificent face of rock had us both excited. It seems highly appropriate that Perrin starts his essay on the Mewsford Point routes by referring to being a bit jaded: "there comes a time in every climber's career when only the very best will stir the pioneering zeal". I had been injured

and I didn't feel confident enough to try anything hard (for me). Daydreams seemed perfect. Neither of us had done it, in fact I'd never even been to Mewsford. I cadged a lift to the Stack Rocks car park while Mike (Mowbray) headed over on his scooter so that we could head back at a family friendly hour. There was an outbreak of faffing in the car park before the rest of the team headed into Range West and we turned East for Mewsford. The walk was pleasant in the sunshine and a chat with Mike is usually an education and always entertaining.

The wall is marked by a lookout point above a large wedge-shaped ramp in the sea below, so it wasn't too difficult to find. We rigged the abseil and I slid down past some disturbingly large roofs. I had read about how the climbing starts strenuously but eases as you get higher and the exposure increases. There was chalk visible on Surprise Attack from the abseil but our target started further right. The tide was out so I scrambled up the ramp away from the crag to spy the line. The slanting groove on pitch two looked stunning and it was to be my pitch. The juices were flowing.

Pitch one has a slightly awkward move or two off the deck without much in the way of gear, but you're soon rewarded with jugs and good runners. There is a committing move up into the groove but it too is short lived before a romp leftwards along the break. I made sure to protect the second and kept going. The guide has the traverse as 6m long but it's a lot longer than that. I ducked under a bulge or two and stopped to gawp up at the stunning groove slanting back right. Wow. It looked superb, designed to be climbed. I found a comfortable belay on threads and Mike soon joined me. The clouds had rolled in now and I felt a few spots of rain. The delicate manoeuvres required for that groove pitch would be exciting in the wet. We had better get a move on.

The changeover wasn't the slickest to say the least, but after untying twice (!) I was ready for pitch two. The moves off the belay were committing and the first runners were a while coming but the climbing was a superb flow of balance moves. With a couple of bomber wires I was invincible now, a massive grin on my face as I worked my way across and up. It really was one of those pitches that you want to be twice its length. All too soon I pulled onto the slab under the final roof. Our guide had suggested it was possible to combine pitch 2 and 3, but it looked like a recipe for some serious rope drag, so I belayed and brought Mike up.

We swapped the rack over, a little more efficiently this time and Mike set off. There were some old-fashioned techniques on display as he wriggled up into the groove over the roof, and then he disappeared from view. The ropes ran out steadily before a yell of "safe". There were more gloomy clouds out to sea but at least Mike was at the top now. I could relax. I set off and had a shock almost immediately. The groove was hard and awkward – old school as I think they call it. I jammed a knee in somewhere and arrived panting at the next roof. A wide crack slanted across above a chasm to the left. Wriggling frantically and trying not to contemplate where I was going to swing to if I fell off, I strode left. Pasting my feet on I udged across. My right hand sank into a jug but my arm was so

tightly wrapped around the protruding block, I couldn't move. More thrashing and finally I escaped into the finishing groove. The rock changed to an odd amalgam, and I tiptoed carefully up to join Mike. A few more drops of rain blew in. We threw the kit into the bags and raced off. By the time we had got back to the car park the sun was shining again. What a route, a cure for the jaded climber for sure.

Thanks to everyone who came and made it such a good trip:
Mike and Alison Mowbray, Roland and Angela Pingram-Smith, Mick and Helen Hayes, Tom and Ellie Hayes, Simon and Maggie Pape, Ben and Sharon.

Christopher David Martin October 1936 – May 2022



This photograph was taken in October 2009 when George and Janet Reynolds visited the Martins. Chris described the photo as “taken on our walk together over Beachy Head. I am on the right – closing on 80!”

Chris Martin, as a young man, qualified as an electrical engineer and lived and worked near Nottingham but his main interests were mountaineering and cycling, He loved to spend all his free time in the mountains and this led him to join the Oread.

During his National Service he volunteered to join a scientific expedition to survey glaciers which gave him the opportunity to visit some wonderful mountain areas.

Sadly work forced a move far from the mountains to Bexhill on Sea where he compensated for a lack of mountain rescue opportunities by joining the Coastguards.

He and Halina continued to travel to mountain areas whenever they could - in Europe, and later to India and New Zealand.

Chris passed away suddenly on 18 May. Our sympathy goes to his wife, Halina and son, Jeremy.

Hut Bookings.

Both our Welsh and Derbyshire hut bookings have now moved online at the Oread website www.oread.co.uk.

The new system allows you to see up to date bed availability details and make your own bookings.

Please remember to sign in as members first before making your bookings as you get access to the Oread beds and rates and you don't have to enter lots of details required for external bookings.

All queries and outstanding payments should be addressed to Michael Hayes, the Hut Bookings Secretary: 179 Starkholmes Rd. Starkholmes, Matlock DE4 5JA Mobile 07771 700913. Email: michaelhayes6688@gmail.com

Our preferred method of payment is via bank transfer to our Lloyds account – Sort Code 30-98-97 Account number 62584068. Please use the 'Reference' box to say what the payment is for. **In particular please say which hut, ie Hut fees HL, or Hut fees TyW.** Your name is not necessary in the reference, unless it is different from the bank account name.

Alternatively you can post a cheque, payable to Oread M.C. to the above address.

Information on Member Activities

Welcome to new provisional member Christopher Mather. We hope you will enjoy many happy days with the Oread.

An application for full membership has been received from Stephen Booth. If you would like to comment on this application please contact a member of the committee.

John Fisher has a new mobile phone. xxxxxxxxxx. He would be very pleased to hear from you all.

Rusty's Puzzle Corner

This month's puzzle:

What is the colour of an organism (hesperiidae) which traverses the face of which major UK rock climbing venue?

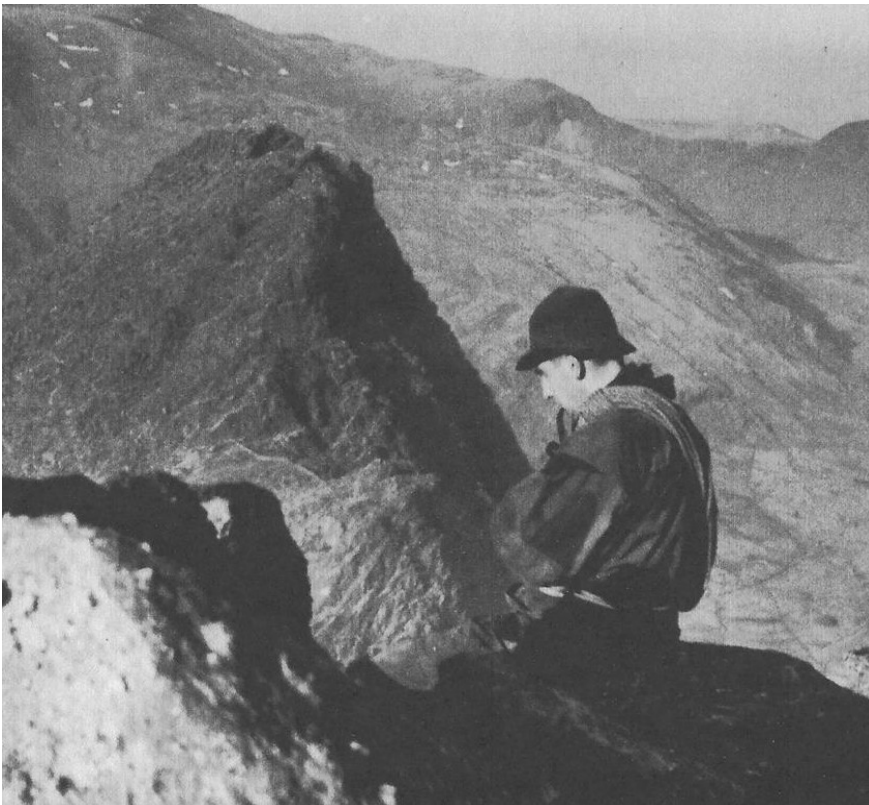
Last month's puzzle solution:

The "advanced rope technique" demonstrated by Chris as he attempted to retrieve a stuck rope at Harpur Hill by climbing up on the free end provided some amusement and the prize winner is undoubtedly Rusty with the following explanation:

"Always assuming that Chris is not in the early stages of weaving a modern day equivalent of a Piggot stretcher, my first thoughts were that the loops in the rope were what is known in my locality as a "lorry drivers hitch" used to shorten a cargo rope and prevent the spare length from trailing on the ground (I believe this species of knot is officially known as a Sheepshank}. Further and more rational thought suggested that he might be about to embark on a solo ascent using loops in the rope to self belay and then remove the attachment to a lower point of protection when he was attached pro tem to a higher belay point."

Please, dear readers, do not attempt this technique at home – or anywhere else for that matter!

Name the Gnome



Last month's vintage gnome was variously identified as John Linney in the Moelwyns in the 1960s, John Welbourne, Hank, - or even Hank's dad and "It's definitely Sherlock Holmes starring in a late '50s or early '60s mystery!"

None was correct – the provider of the photo says it is he, Paul Gardiner, on Bristly Ridge some time in the 1950s.

And to finish – here is another splendid vintage gnome!



*Editor: Ruth Gordon, 4, The Terrace, Upper Lumsdale, Matlock, Derbys. DE4 5LB
Tel. 01629 56636 07999 857 922. Email alistair.ruth@btinternet.com*